

SUMMIT
2024

MAY 11
NEW YORK

THE
VOCAL
JOURNALS

WELCOME

Welcome to The World Around Summit 2024! This program is an annual convening of the emerging voices and leading lights of architecture, design and related fields. It was created to celebrate the work and ideas of practitioners who are using creativity, in all its forms, to meet the challenges and the possibilities of our time.

At its heart, The World Around seeks to answer the question: “Why does architecture matter?” We respond by examining the built projects of extraordinary global practitioners who share a common goal and belief: that their work can improve society. By sharing, amplifying and championing this work, we hope to inspire more people to learn from and react to the depth and range of architecture and design today.

We are proud to present this Summit in partnership with the Guggenheim for the fourth consecutive year, and thank Cyra Levenson and Jennifer Yee for their ongoing collaboration. We are honored to continue our creative collaboration with our Global Cultural Partner, the Fondation Cartier pour l’art contemporain. We welcome and thank our new Partner, Unifor, and appreciate the support of our friends at the Graham Foundation in Chicago.

I profoundly thank The World Around's board chair Adam Flatto; board of directors Vishaan Chakrabarti, Elizabeth Diller, Peter Dillon and John Haskell; our executive producer Satomi Blair; Ana Minujin, Dan Howarth, Laxmi Andrews and Milena Sales. As always I thank our board of advisors for their steadfast support throughout our journey. As a 501(c)(3) non-profit organization, The World Around is funded by a generous group of individuals and our global partners. To find out more, please reach out to us directly.

I hope you enjoy the day.

BEATRICE GALILEE
CO-FOUNDER AND EXECUTIVE DIRECTOR
THE WORLD AROUND
#TWASUMMIT2024

ABOUT THE WORLD AROUND

The World Around is a non-profit institution founded in 2020 with the goal of enriching and empowering architectural discourse. Through a robust series of international events and broadcasts, the platform seeks to connect and create a diverse and global network of thinkers and makers today.

Collaborative in spirit and global in scope, we have four pillars of practice: our fast-paced and cutting-edge all-day Summit in New York City created to convene and champion the now, near and next of architecture; our In Focus programs that travel to new cities presenting curated talks on specific themes; our online archive of live broadcasts, interviews and presentations; and our new Young Climate Prize mentorship program for under 25s.

In close to five years, we have covered the work of designers from over 150 world cities, each of them sharing visionary work on topics that range from the ecological crisis to social and racial justice, from landscape design and food scarcity to homelessness, from video game design and artificial intelligence to spoken word and literature. Working closely with our growing network of international partners that includes New York's Guggenheim Museum, Rotterdam's Nieuwe Instituut, London's Design Museum, and our global cultural partner the Fondation Cartier pour l'art contemporain.

theworldaround.com | [@theworldaround](https://www.instagram.com/theworldaround)

WELCOME

As we are navigating the rapidly changing landscape of the future, it is essential that we give a platform to the artists, architects, and designers who can help guide us towards an ethical and collaborative vision for all species to thrive. The World Around Summit provides that space and we are pleased to be co-organizing this annual event in 2024. The Guggenheim Museum was founded on the idea that works of art can illuminate reality, create new imaginaries, and shift consciousness. We have always believed in taking our lead from creative visionaries because we know they help us see and imagine what we otherwise could not.

The Frank Lloyd Wright building was designed to create a different kind of space to experience works of art, but also to experience each other. The museum is a civic space, a place for dialogue, and for a collective sense of wonder. Wonder requires an attunement to one's own senses and perceptions, but also an appreciation of the limitations of our own ideas. Today's presenters expand ways of thinking, ways of making, and ways of connecting with each other. They use the power of story and the tools of design, architecture, creative practice, and community organizing to insist that we imagine a future where we can live on this planet together.

CYRA LEVENSON
DEPUTY DIRECTOR, EDUCATION AND PUBLIC ENGAGEMENT
THE GUGGENHEIM

ABOUT THE GUGGENHEIM

The Solomon R. Guggenheim Foundation was established in 1937 and is dedicated to promoting the understanding and appreciation of modern and contemporary art through exhibitions, education programs, research initiatives, and publications. The international constellation of museums includes the Solomon R. Guggenheim Museum, New York; the Peggy Guggenheim Collection, Venice; the Guggenheim Museum Bilbao; and the future Guggenheim Abu Dhabi. An architectural icon and “temple of spirit” where radical art and architecture meet, the Solomon R. Guggenheim Museum is now among a group of eight Frank Lloyd Wright structures in the United States recently designated as a UNESCO World Heritage site.

To learn more about the museum and the Guggenheim’s activities around the world, visit guggenheim.org.

SCHEDULE

Welcome to The World Around Summit 2024, a daylong celebration of the work of extraordinary designers and architects whose work and ideas meet the global challenges and possibilities of today.

1:00 PM

SESSION 1: AN EXAMINED WORLD

WELCOME: CYRA LEVENSON, SOLOMON R. GUGGENHEIM MUSEUM

INTRODUCTION: BEATRICE GALILEE, *THE WORLD AROUND*

1.

NERI&HU, LYNDON NERI AND ROSSANA HU, *RE:*

2.

STUDIO BARNES, GERMANE BARNES, *WATCH THE TONE*

3.

ARB VIETNAM, NGUYỄN HÀ, *ĐẠO MẪU MUSEUM & TEMPLE*

4.

ERNESTO PICCO, *LITHIUM CHRONICLES*

5.

MAE-LING LOKKO, *THE WORLD AROUND WITH COCONUTS*

6.

SO-IL, JING LIU AND FLORIAN IDENBURG, *IN DEPTH*

7.

EMANUELE COCCIA, *HOMES: HOW TO DESIGN OUR MORAL TOPOGRAPHY*

BREAK

3:30 PM

SESSION 2: A FLUID TERRITORY

INTRODUCTION: BEATRICE GALILEE, *THE WORLD AROUND*

8.

JAKOB KUDSK STEENSEN, *THE EPHEMERAL LAKE*

9.

SUB, NIKLAS BILDSTEIN ZAAR, *MANTICORE*

10.

ALEXIS SABLONE, *SKATESPACE: UNDEREXPLORED TERRAIN*

11.

SP+A, SAMEEP PADORA, *LOOKING FOR CONTEXT*

IN CONVERSATION:

12.

THE LUCAS MUSEUM OF NARRATIVE ART,
SANDRA JACKSON-DUMONT, *DIRECTOR AND CEO*

13.

MAD ARCHITECTS, MA YANSONG

MODERATED BY:

ASIMA JANSVELD, *THE HIGH LINE NETWORK*

BREAK

5:00 PM

SESSION 3: A PLANETARY LANDSCAPE

IN CONVERSATION:

14.

TURENSCAPE, KONGJIAN YU

15.

MASS DESIGN GROUP, JOE CHRISTA GIRASO

16.

FIELD OPERATIONS, LISA SWITKIN

MODERATED BY:

BEATRICE GALILEE, *THE WORLD AROUND*

BÉATRICE GRENIER, *FONDATION CARTIER POUR L'ART CONTEMPORAIN*

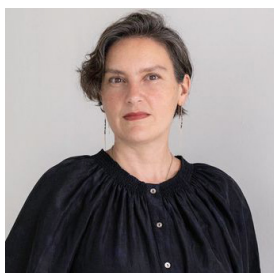
SESSION 1

AN EXAMINED WORLD

To open this year's Summit, we will be diving into the details, and looking at some of the critical thinking and expansive social, scientific and political forces that inform designers and architects today. An Examined World will share the processes both of making and sustaining homes, museums and spaces of care and community. We will journey to the lithium-rich deserts of northern Argentina, and learn about the Vietnamese folk stories and traditional crafts that informed a new temple and garden in Hanoi. The session will provide historical context to a long-abandoned tower in Memphis that will be transformed into a campus centered on Black innovation, and we will join architects as they revisit a trilogy of newly built housing projects in Brooklyn. In closely examining and returning to the landscape around us, we will be introduced to innovative developments in materiality by an architectural scientist dedicated to working with renewable bio-based materials, and the session will close with a philosopher's reflection on the psychological and cultural significance of the home.

CYRA LEVENSON

THE GUGGENHEIM



@guggenheim
guggenheim.org

During a career spanning 25 years and five museums, Levenson is dedicated to making museums dynamic learning environments. She leads the Guggenheim's Education and Public Engagement Department in partnership with the museum's international network.

In previous roles she established a community arts center at the Cleveland Museum of Art, created a partnership between Yale University and the Smithsonian Institution, and has published on creativity, cognition and public humanities practice. She is a graduate of Teachers College.

BEATRICE GALILEE

THE WORLD AROUND

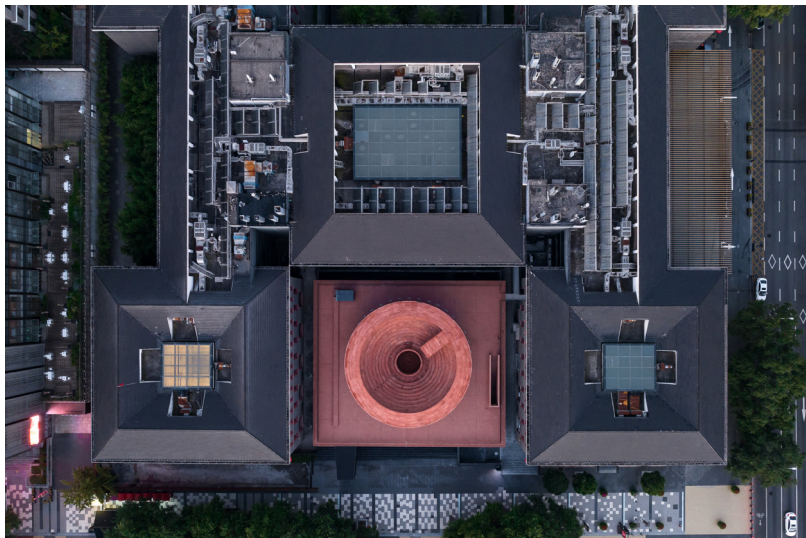


@beatricegalilee
@theworldaround
theworldaround.com

Beatrice Galilee is a New York-based curator, writer and cultural advisor, internationally recognized for her expertise in global contemporary architecture and design. Galilee is Co-founder and Executive Director of The World Around, a global platform for contemporary design and architecture in residence at the Guggenheim Museum. From 2014–2019, she served as the first curator of contemporary architecture and design at The Metropolitan Museum of Art. Galilee is a visiting professor at Pratt Institute, where she lectures on curating. She is the author of *Radical Architecture of the Future* (Phaidon, 2021).

LYNDON NERI AND ROSSANA HU

NERI&HU



Lyndon Neri and Rossana Hu formed their joint Shanghai-based practice, Neri&Hu, in 2004. Spanning master planning, architecture, and furniture and product design, its approach draws on various disciplines to create spaces that enrich contemporary life through their connection to a collective past. For the Tsingpu Yangzhou Retreat, a short distance from Yangzhou's scenic Slender West Lake, Neri&Hu utilized strong landscape elements—the wall and courtyard—to unify a complex site and program. The project breathes new life into its existing buildings, while employing reclaimed materials to redefine tradition through a modern architectural language.

neriandhu.com
@neriandhu



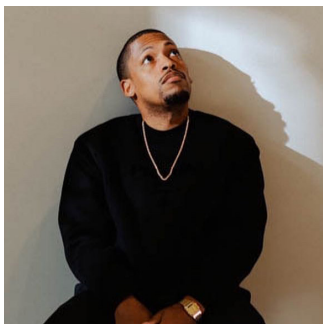
GERMANE BARNES

STUDIO BARNES



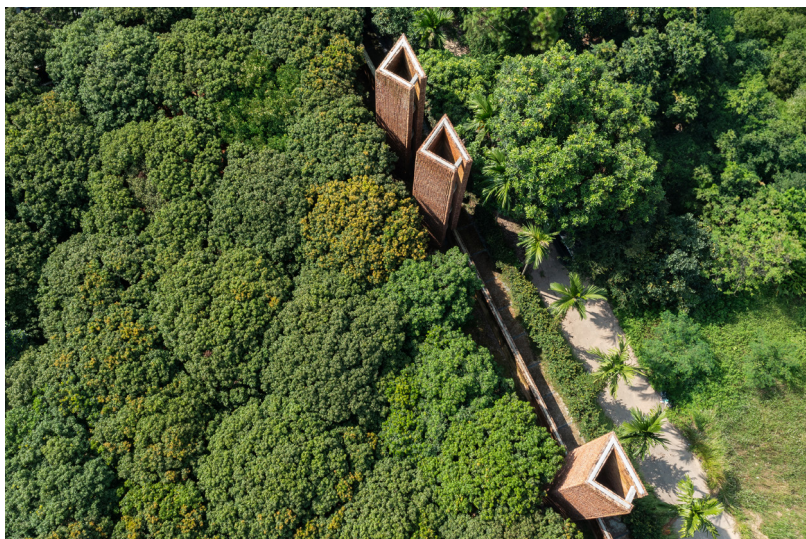
As Principal of Studio Barnes, an award-winning architecture practice based in Miami, Germane Barnes uses historical research and design speculation to examine the reciprocal relationship between identity and the built environment. At Orange Mound Tower, Barnes is teaming up with record label Unapologetic and nonprofit TONE to revitalize a derelict industrial site in Memphis, Tennessee, as a home for Black innovation. The arts-centered mixed-use development aims to support the historic Black neighborhood in which it resides and empower its homegrown producers, establishing a permanent base for local creative industries as a baton to pass to the next generation.

germanebarnes.com
[@germane.barnes](https://www.instagram.com/germane.barnes)



NGUYỄN HÀ

ARB ARCHITECTS VIETNAM



Nguyễn Hà founded ARB Architects Vietnam in 2009. Based in Hanoi, the practice aspires to create an architecture that leads people to serenity, allowing ritual and tradition to enter into modern life. A collaboration with acclaimed folk artist Xuân Hinh, the Đạo Mẫu Museum and Temple is a poetic interpretation of local material histories on an orchard plot outside the Vietnamese capital. Reconciling traditional construction with contemporary form, the temple bears witness to the urbanization of rural landscapes in Vietnam, while standing to preserve a threatened cultural heritage. Hà received the Moira Gemmill Prize for Emerging Architecture for the project in 2024.

@nguyen_ha_arb
@arb.architects



ERNESTO PICCO

INVESTIGATIVE JOURNALIST



In South America's 'Lithium Triangle'—a mineral-dense region encompassed by the borders of Argentina, Chile, and Bolivia—state actors and corporations compete for control over a metal essential to powering the green transition. Dr. Ernesto Picco, an investigative journalist and a professor at the National University of Santiago del Estero, Argentina, has been researching the unseen consequences of these operations, documenting the profound environmental and human toll felt in the communities living around these vast sites of extraction. His field studies culminated in his latest book, *Crónicas del litio: Sudamérica en disputa por el futuro de la energía global* (Futurock, 2022).

@ernesto.picco



MAE-LING LOKKO

WILLOW TECHNOLOGIES



Mae-ling Lokko is a Ghanaian-Filipino designer and architectural scientist, and an assistant professor at the Yale School of Architecture. Situated between art, architecture, material science, engineering and education, her activism-driven practice strives toward 'generative justice' in our material cultures. Through her organization Willow Technologies, an initiative begun to repurpose agricultural waste as affordable, bio-based building materials in Ghana, Lokko is testing how we return value to our waste, repositioning the byproducts of human consumption as the materials of the future.

maelokko.com
@maelokko
willowtechghana.com
@willowtechnology



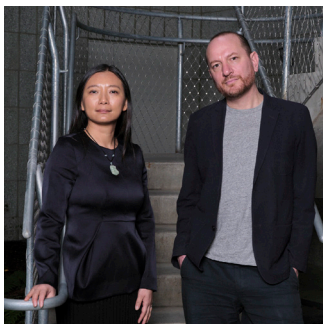
JING LIU AND FLORIAN IDENBURG

SO-IL



SO-IL was founded by Jing Liu and Florian Idenburg in 2008. Drawing on the diverse perspectives of its team, the practice aims to create dialogues between people and their environments through restless experimentation and material innovation, completing projects in Leon, Seoul, and Lisbon. In its recent homecoming to Brooklyn, New York, for three residential buildings, SO-IL laid aside outdated conventions in urban housing design while respecting the borough's historic context to test new, sustainable models of city living—designed around conversation between indoors and outdoors, and with others.

so-il.org
@solidobjectives



EMANUELE COCCIA

PHILOSOPHER AND WRITER



Emanuele Coccia is a philosopher and associate professor at the École des Hautes Études en Sciences Sociales in Paris. Through his inquiries across media, collaborating with photographers, curators, designers and artists, Coccia has often examined the materiality of the contemporary world, traversing nature, urban space and fashion, writing an aesthetics for the Anthropocene Era. In his latest book, *The Philosophy of the Home*, Coccia meditates on a familiar concept—the domestic—to deconstruct the outdated assumptions built into our homes, emphasizing the need for the architecture we practice today to respond to emerging forms of living together.

@unicamens



SESSION 2

A FLUID TERRITORY

In our second session, we embrace the flexible and multi-hyphenate nature of many artists, designers and architects today. We invite an artist working in virtual ecologies to share a newly commissioned work that brings landscape art into a digital environment; an Olympic skateboarder with a global design practice building bespoke inner-city skate plazas; and an architecture studio working with artists, film directors and fashion designers to create strikingly original designs and spaces. We travel to Karnataka to learn about an extraordinary new center for arts in the village of Hampi, a UNESCO World Heritage Site in India. The session will end with a fascinating conversation that will, for the first time, introduce an extraordinary new under-construction museum project: the Lucas Museum of Narrative Art. Together with its architect and its founding director, we will also discuss the role of the building as a landscape that will contribute to its community in South Los Angeles.

JAKOB KUDSK STEENSEN

ARTIST



Jakob Kudsk Steensen is a Danish artist working with environmental storytelling through 3D animation, spatial sound and enveloping installations. He creates poetic interpretations about overlooked natural phenomena through collaborations with field biologists, composers, scientists and writers, constructed through extensive fieldwork. Key collaborators include the singer ARCA; musical director of Phillip Glass Ensemble, Michael Riesman; and the South Korean band BTS. Steensen has exhibited at Luma Arles, Serpentine Galleries, Halle am Berghain, ARoS Museum of Art, Phi Center, Venice Biennale and more.

jakobsteensen.com
[@jakob_kudsk_steensen](https://www.instagram.com/jakob_kudsk_steensen)



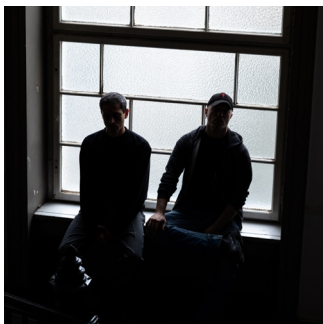
NIKLAS BILDSTEIN ZAAR

SUB



Founded by Niklas Bildstein Zaar and Andrea Faraguna in 2017, SUB designs in the synthesis of research, technology and architecture. A team drawn from across disciplines and cultures, the office aims to simultaneously address scales spanning time and space, developing a worldbuilding language that transduces the sociocultural dynamics into sensorial environments. SUB is the innovative force behind the Balenciaga Architecture Program—from the ‘Raw Architecture’ of its flagship stores, to the absorptive atmospheres of its shows—and recently designed the apocalyptic stage set for Travis Scott’s Pompeii amphitheater performance.

sub.global



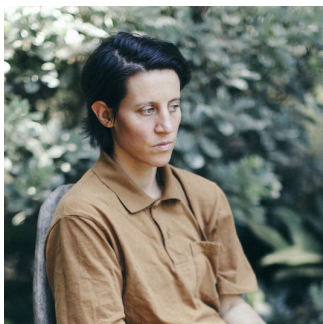
ALEXIS SABLONE

ARCHITECT, ARTIST AND OLYMPIC SKATEBOARDER



Alexis Sablone is an architect, designer and multidisciplinary artist—and an Olympic skateboarder. Drawing on decades on a board, their practice investigates the social codes that operate in public space to test how urban design can strengthen the social fabric of our cities. Experimenting across materials and construction technologies, their large-scale ‘skateable’ sculptures encourage the creative mis-use of public space, hoping to invite a wide, growing spectrum of communities to share its stewardship. Now in construction, their most recent project, Sun Seed, is at once sculpture and plaza, offering a space where skaters and non-skaters alike can play, wonder and gather in Richmond, Virginia.

alexissablone.com
[@suminaynay](https://www.instagram.com/suminaynay)



SAMEEP PADORA

SP+A



Sameep Padora is the founding principal of Sameep Padora and Associates (sP+a). Across an award-winning portfolio, the Mumbai-based practice has established an approach that foregrounds context and collaboration, aiming to expand the definition of ‘preservation’ to allow tradition to evolve. At Hampi Art Labs, a world-class arts center sited among the ancient ruins of the Hampi UNESCO World Heritage Site in south India, Padora draws an architecture from the landscape, creating flowing spaces for exhibition, craft and learning, while heeding the cultural lineage of its location.

sp-arc.net

[@sameeppadora](https://www.instagram.com/sameeppadora)

[@spplusa](https://www.instagram.com/spplusa)



SANDRA JACKSON-DUMONT

THE LUCAS MUSEUM OF NARRATIVE ART



In the current chapter of her extensive career as an institutional leader, curator, and educator at some of the most renowned museums in the USA, Sandra Jackson-Dumont is serving as the Director and Chief Executive Officer of the new Lucas Museum of Narrative Art. Set to open its doors in 2025, the Lucas Museum will be the first museum centered on the power of visual storytelling; a cultural institution reimagined as a space where art can bring communities closer and connect them to the world beyond its walls. Jackson-Dumont oversees all curatorial, educational, public, and operational affairs for the museum, including the realization of its Los Angeles home.

lucasmuseum.org
@lucasmuseum
@sandrajacksondumont



MA YANSONG MAD ARCHITECTS



Founded by Ma Yansong in 2004, MAD Architects is a renowned global architecture practice, transcending boundaries in design through constant innovation and collaboration across disciplines. For its most recent commission, the Lucas Museum of Narrative Art—the first overseas cultural landmark to be designed by a Chinese firm—MAD’s process reaches beyond the building to weave the future-minded institution into the cultural fabric of Los Angeles, aiming to sustain a symbiosis between humans, their urban environment, and the natural world.

i-mad.com

[@mayansong_mad](https://www.instagram.com/mayansong_mad)

[@madarchitects](https://www.instagram.com/madarchitects)



MODERATOR

ASIMA JANSVELD

FRIENDS OF THE HIGHLINE



@highlinenyc
network.thehighline.org

Asima Jansveld is Chief Program and Engagement Officer at Friends of the High Line. Within her role, Jansveld leads the High Line Network, overseeing and supporting a community of urban reuse projects across North America. Bringing life to underutilized urban infrastructures, the network aims to realize the civic potential latent in these sites to create vibrant public spaces; centering urban climate resilience, platforming local voices, and strengthening communities through equitable development. Jansveld has previously held leadership roles at NYC Economic Development Corporation and European Urban Knowledge Network, advising on place-based policy and cross-sector learning, and supporting inclusive, robust cities under the 100 Resilient Cities network.

SESSION 3

A PLANETARY LANDSCAPE

This final session will close the Summit by bringing together some of the most important voices in landscape architecture today. While architects and urban planners typically take a lead role in conversations on the future of cities, A Planetary Landscape will show ways in which a collaborative, integrated and informed approach to urbanism, landscape and architecture may be instructive and productive in an ever-warming world—one in which landscape, climate and the interrelated fall-out will not adhere to national borders. The panel was collaboratively conceived and co-curated by The World Around's Beatrice Galilee and the Fondation Cartier pour l'art contemporain's Béatrice Grenier.

PRESENTED WITH
THE WORLD AROUND
GLOBAL CULTURAL PARTNER

Fondation *Cartier*
pour l'art contemporain

CO-CURATORS

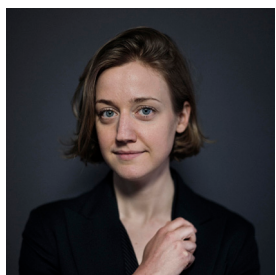
BEATRICE GALILEE THE WORLD AROUND



For Beatrice Galilee's bio please refer to page eight (8).

@beatricegalilee
@theworldaround
theworldaround.com

BÉATRICE GRENIER FONDATION CARTIER



@bgxtrice
@fondationcartier
fondationcartier.com

Béatrice Grenier is a Paris-based curator and writer, and the current Director of Curatorial Affairs at Fondation Cartier pour l'art contemporain.

Grenier writes on contemporary visual culture and its relationship to natural and urban landscapes. She is the co-author of *Tashkent: A Modernist Capital*. Her book *The Architecture of Art*, is forthcoming in 2025 as part of Rizzoli's catalogue. She is the Paris desk editor of *ArtAsiaPacific*. Prior to her current role, Grenier served as Content Strategy Consultant at Google Arts and Culture in China.

KONGJIAN YU

TURENSCAPE



Since proposing the idea of the ‘sponge city’ in 2013, Professor Kongjian Yu has received global recognition for his research into urban flooding and climate adaptation strategies. As principal designer of Turenscape, a world-renowned practice reshaping the disciplines of landscape and urban design, Yu brings these principles into practice to design more resilient cities and reconnect people to the earth. Building on ancient teachings and traditional land practices, Turenscape re-approaches landscape architecture as a conservation practice, presenting opportunities to steward the environment for future generations.

turenscape.com
@kongjianyu_turenscape
@turenscape



JOE CHRISTA GIRASO

MASS



Joe Christa Giraso is a landscape designer at MASS: an international design group on a mission to research, build and advocate an architecture that promotes social justice and projects new possibilities for the future. At the Rwanda Institute of Conservation Agriculture—a growing university leading the future of sustainable agriculture in Gashora, Rwanda—MASS adopted a landscape approach from the curriculum. Through the conservation and restoration of the surrounding savannah woodlands, the team is aiming to support agriculture in symbiosis with nature, nurturing a relationship to landscape rooted in the interconnection of ecological, animal and human health.

massdesigngroup.org
[@massdesigngroup](https://www.instagram.com/massdesigngroup)
[@joechrista](https://www.instagram.com/joechrista)



LISA SWITKIN

FIELD OPERATIONS



Lisa is a Partner at Field Operations, a leading-edge landscape architecture and urban design practice, where she leads many of the firm's complex public realm projects. Throughout her career, Lisa has championed design and planning projects that creatively contend with complex issues related to social equity, climate change, and sustainable urbanism. For over 20 years, Lisa has been intimately involved in many multi-disciplinary projects including New York City's High Line, Domino Park in Brooklyn, Santa Monica's Tongva Park, Gansevoort Peninsula in Hudson River Park, the River Balcony in Saint Paul, and the transformative master plans for Staten Island's Freshkills Park, Shelby Farms Park in Memphis, The Underline in Miami, Waterfront Seattle, and most recently, Cleveland's North Coast Master Plan.

Lisa is a Past President of the Landscape Architecture Foundation and currently serves on the Board of Directors for the Urban Design Forum. She is a registered landscape architect in New York and has holds a Bachelor of Urban Planning with a focus on Community Development Planning from the University of Illinois and a Master of Landscape Architecture and Regional Planning from the University of Pennsylvania.

fieldoperations.net

[@fieldoperations](https://www.instagram.com/fieldoperations)



THE WORLD AROUND GLOBAL CULTURAL PARTNER

Fondation *Cartier* pour l'art contemporain

For nearly forty years, the Fondation Cartier has maintained a commitment to championing the work of groundbreaking thinkers in and around architecture and design from around the world with the critical presentation of projects, exhibitions, lectures and programs with practitioners such as Junya Ishigami, Jean Nouvel, Diller Scofidio + Renfro, Alessandro Mendini, Formafantasma as well Solano Benitez and Gloria Cabral, Freddy Mamani, Mauricio Rocha, and the architect Bijoy Jain.

fondationcartier.com | [@fondationcartier](https://www.instagram.com/fondationcartier)

THE WORLD AROUND PARTNER

UniFor

The commitment to architecture and manufacturing know how are the founding principles of UniFor's business strategy. The company's main interlocutors have always been the architects who design its products and the buildings and environments that contain them. Since 1969, the profound collaborative relationships that have accompanied every stage of the design and production process, facilitated by constant dialogue, have resulted in series products and custom furnishings capable of meeting the ever-changing needs of contemporary office environments. UniFor develops furnishing systems that aim to interpret, through simple solutions, the complexity of the workplace.

unifor.it | [@unifor_official](https://www.instagram.com/unifor_official)



UniFor furniture photograph by Alberto Strada

Designed by Washington-based architectural firm LSM, and developed by UniFor, the Andromeda collection is conceived to fit elegantly into a variety of contexts, blending naturally into workplaces, public spaces, and domestic areas. Its clean lines and attention to detail help create professional environments that reflect the company's image of innovation and high quality. In private homes, the collection becomes a distinctive element, lending uniqueness to the space.

"A precise creative vision combined with an industrial mission give shape to the Andromeda collection, a unique development distilling down to the essence the evolutionary journey between LSM and UniFor. Andromeda, a collection of timeless elegance and refinement, is the result of a collective commitment to excellence."

Carlo Molteni, UniFor CEO

The name of the collection derives from the location chosen by Studio Klass, Art Director of UniFor, as the ideal setting for photographing the furniture: the Andromeda Theatre, situated in the mountains of Sicily.

"Classically imagined. Precisely beautiful. The collection is a testament to true collaboration, exacting refinement, and unsurpassed craftsmanship. Andromeda is elegant everywhere and timeless always."

Debra Lehman Smith, LSM Founder

UniFor

THE WORLD AROUND SUPPORTERS

Graham Foundation


Founded in 1956, the Graham Foundation for Advanced Studies in the Fine Arts fosters the development and exchange of diverse and challenging ideas about architecture and its role in the arts, culture, and society.

grahamfoundation.org | [@grahamfoundation](https://twitter.com/grahamfoundation)



UP[®]

PIN-UP



Looking to hire staff in the US?
Post a job ad before 31 May for
20 per cent off, plus
two extra weeks free!

de
zeen**jobs**

YOUR TURN YOUR VOICE

**APPLY
NOW**

The World Around Young
Climate Prize mentorship
initiative for under 25s
youngclimateprize.com

THE
WORLD
AROUND

YOUNG
CLIMATE
PRIZE

SAVE THE DATE

SUMMIT 2024

MAY 11

Guggenheim Museum,
New York City

YOUNG CLIMATE PRIZE

JULY 31

Applications Close

SEPTEMBER 1

Cohort Announcement

We have such an exciting year ahead! Today, the fifth edition of The World Around's flagship Annual Summit, convening global architecture's now, near and next, takes place here in NYC.

Applications are already open for the second edition of the Young Climate Prize, our bespoke mentorship and award program created to help under 25s amplify their climate-focused projects. Applications and nominations are being accepted via www.youngclimateprize.com until the end of July, and the cohort of 25 will be announced in September.

ANNUAL DINNER

NOVEMBER 15

Park Avenue Armory,
New York City

Our Annual Dinner at New York City's beautiful Park Avenue Armory is planned for November. This special evening will begin with a talk from a world-renowned architect (to be announced soon) followed by a cocktail reception and a delicious, internationally flavored dinner.

THE WORLD AROUND & FONDATION CARTIER IN FOCUS: LANDSCAPE

DECEMBER 7

Shanghai

We'll end the year in Shanghai, hosting the In Focus: Landscape program with our global cultural partner, the Fondation Cartier pour l'art contemporain. Top landscape architects, environmentalists, and urban planners will convene to present the most innovative projects in their fields. We hope to see you at as many of our event as possible!

JOIN OUR CIRCLES



JOIN THE WORLD AROUND CIRCLES

The World Around is a 501(c)(3) registered charity and our work is made possible thanks to the support of our generous and engaged community. By joining our circles as either an individual or a company, you ensure that our public programs including our annual TWA Summit and our charitable initiatives including Young Climate Prize can continue.

Give to The World Around and support architecture and design's now, near, next.

JOIN TODAY

For inquiries about partnership opportunities please contact us at partnerships@theworldaround.com

THANK YOU

TO OUR 2024 CIRCLE MEMBERS

Major Benefactors Circle (\$20,000+)

Fondation Cartier pour l'art
contemporain
Curry Stone Foundation
Georgetown Company

Young Climate Circle (\$10,000+)

A4 Foundation
Re:Arc Foundation
Peter Guggenheimer

Benefactors Circle (\$5,000+)

2x4
Atla Capital
Aesop
John Alschuler & Diana Diamond
Marc Benda, Friedman Benda
Diana Darling
Diller Scofidio + Renfro
Peter Dillon, Brunswick Group
MAD Architects
Marian Goodman Gallery
Andy Klemmer, Paratus Group
Andy Rifkin, Nine Orchard
PAU
Phaidon
WHY Architects

Supporters Circle (\$1,000+)

Arup
Kara & Dov Barnett
Laurie Beckelman
Louise Braverman
Diana Diamond
Barbara Flynn
Lula Galeano
Eric Gertler
Claudia Glasser
TJ Gottesdiener
Randall Griffey
Rockwell Group
Molly Heintz
Marilyn Hernandez
Elise Jaffe
Kat McElroy

Monika McLennan
Sara Meltzer
Meryl Meltzer
Deidrea Miller & Jens Knudsen
Louise Neri
SO – IL
Yana Peel
Ben Rawlingson Plant
Suchi Reddy
Adam Rolston

Friends & Family Circle (Up to \$1,000)

Margaret Arbanas
Benjamin Ball
Justin Beal
Laurie Beckelman
Felix Burrichter
Lori Camilleri
Aric Chen
Angharad Coates
Andrew Heid
Hlin Helga Gudlaugsdottir
Robert Kasdin
Marisa Katz
Beth Massey
Jessica Merritt
Madeeha Merchant
Charles OByrne
Henk Ovink
Avani Parikh
John Patrick
Chee Pearlman
Stephan Wurster

**The World Around works in
partnership with global museums
and organizations to provide
international programming of the
highest standard. Our institutional
partners are:**

**Solomon R. Guggenheim Museum,
New York City, USA**

Nieuwe Instituut, Rotterdam, NL

Design Museum, London, UK

THE WORLD AROUND

EXECUTIVE DIRECTOR
Beatrice Galilee

**DIRECTOR OF EXTERNAL AFFAIRS
AND PARTNERSHIPS**
Milena Sales

EXECUTIVE PRODUCER
Satomi Blair

EXTERNAL AFFAIRS
Dan Howarth

ASSOCIATE PRODUCER
Ana Minujin

PRODUCTION ASSISTANT
Laxmi Andrews

SOUND DESIGN
Guido Colzani

DESIGN
Creative Direction 2x4
Jae Ee

**THE WORLD AROUND
BOARD OF DIRECTORS**
Adam Flatto, Board Chairman
Vishaan Chakrabarti
Elizabeth Diller
Peter Dillon
John Haskell
Beatrice Galilee

Diego Marroquin, Founder and
Chairman Emeritus

ADVISORY BOARD
Marilyn Hernandez
Ben Rawlingson-Plant
Susan Sellers
Adrián Villar Rojas
Emily de Vismes
Kristen Warwuck

**THE WORLD AROUND
INSTITUTIONAL PARTNER**

GUGGENHEIM

**THE WORLD AROUND
PARTNER**

UniFor

**THE WORLD AROUND
SUPPORTERS**

Graham Foundation

**THE
WORLD
AROUND
CIRCLES**

**THE WORLD AROUND
GLOBAL MEDIA PARTNER**

**de
zeen**

PIN-UP

**THE WORLD AROUND
GLOBAL CULTURAL PARTNER**

Fondation *Cartier*
pour l'art contemporain

IMAGE CREDITS

- Pg. 8 Cyra Levenson portrait
Beatrice Galilee portrait
- Pg. 9 Qujiang Museum of Fine Arts Extension photo by Zhu Runzi
Lyndon Neri & Rossana Hu portrait by Jiaxi Yang & Zhu Zhe
- Pg. 10 Germane Barnes portrait courtesy of Studio Barnes
Photo courtesy of Studio Barnes
- Pg. 11 Towers photo by Trieu Chien courtesy of ARB Architects
Nguyễn Hà portrait by Trangbio
- Pg. 12 Volcán Galán, Argentina photo by Sebastián López Brach
Ernesto Picco portrait
- Pg. 13 Threshold for Return photo by Selma Gurbuz © Mae- Ling Lokko
Mae-ling Lokko portrait by Courtney Sofiah Yates
- Pg. 14 450 Warren photo by Iwan Baan © SO-IL
SO-IL portrait by Brad Ogbonna
- Pg. 15 Philosophy of the Home, book cover crop by Emanuele Coccia
Emanuele Coccia portrait by Frank Perrin
- Pg. 17 Jakob Kudsk Steensen The Ephemeral Lake, 2024.
Live simulation (still). Commissioned by the Hamburger Kunsthalle.
Courtesy the artist.
Jakob Kudsk Steensen portrait
- Pg. 18 Balenciaga New Bond Street store by Annik Wetter © SUB
Sub portrait by Vitali Gelwich
- Pg. 19 Candy Courts © Alexis Sablone
Alexis Sablone portrait by Amber Maalouf
- Pg. 20 Hampi Art Labs, 2023 © JSW Foundation
Sameep Padora portrait
- Pg. 21 Lucas Museum of Narrative Art © MAD Architects
Sandra Jackson-Dumont portrait
- Pg. 22 Lucas Museum of Narrative Art © MAD Architects
Ma Yansong portrait
- Pg. 23 Asima Jansveld Portrait by Liz Ligon
- Pg. 25 Beatrice Galilee portrait
Béatrice Grenier portrait
- Pg. 26 Breathing Sea Wall, Haikou Jiangdong Coastal Park © Turenscape
Kongjian Yu portrait © Turenscape
- Pg. 27 RICA Campus photo by Iwan Baan © MASS Design
Joe Christa Giraso portrait
- Pg. 28 High Line photo by Iwan Baan
Lisa Tziona Switkin portrait by Jake Chessum