

SUMMIT 2026
SATURDAY, MAY 9

THE MUSEUM OF
MODERN ART, NYC

THE
MUSIC
AROUND

WELCOME BEATRICE GALILEE

I extend a very warm welcome to The World Around's seventh annual Summit—our second here at the esteemed Museum of Modern Art. Each year, this gathering of global voices across architecture and its adjacent fields grows more ambitious, driven by the increasingly bold and visionary ideas shared by our remarkable speakers. From the Grand Egyptian Museum to a solo-built garden in the desert, these projects may differ in scale, but they are united by a powerful intent to rethink space and drive meaningful change. As a global platform for architecture and design, The World Around is honored to share them with you today.

Further advancing our mission to champion world-changing ideas, we recently launched the third cycle of our Young Climate Prize—a unique accelerator program for innovators under 25. As a testament to its impact, you'll hear today from Cycle 02 Young Climate Visionary winner, Mohamed Salem Mohamed Ali. We invite you to join us in celebrating his achievement, and in helping us connect with even more brilliant young changemakers around the world.

Thank you for being here and I hope you enjoy the day!

BEATRICE GALILEE
FOUNDER & EXECUTIVE DIRECTOR
THE WORLD AROUND

WELCOME MARTINO STIERLI

The Museum of Modern Art is pleased to be hosting and co-organizing The World Around Summit 2026. This year's Summit gathers practitioners from around the world whose vision has inspired us. Their transformative practices explore architecture's mutability and relevance in today's worlds marked by complexity and insecurity. This forum provides a timely opportunity to contend with issues affecting communities and reframe our ways of thinking—whether in civic, environmental, or spatial terms. Specifically, this year's Summit will explore how architecture interacts with larger ecosystems, and how it can contribute meaningfully to the preservation of cultural heritage. A special panel will discuss the urgency of affordable housing as both an architectural and a social challenge.

MoMA has long played a role in shaping how architecture enters public consciousness, not simply as a matter of form, but as a civic and political discipline. Its history is marked by exhibitions and conversations that have helped reframe urgent issues, from housing and urbanism to climate and public space, often influencing discourse well beyond the museum itself. To situate this discussion here is to place it within that lineage: a setting where ideas are not only presented, but tested, debated, and carried outward.

MARTINO STIERLI
PHILIP JOHNSON CHIEF CURATOR OF ARCHITECTURE AND DESIGN
THE MUSEUM OF MODERN ART

SCHEDULE

Saturday, May 9 2026
The Museum of Modern Art
11 West 53 Street,
New York, NY 10019

Instagram: @theworldaround
Twitter: @thewrldaround
Facebook: /thewrldaround
#summit2026

11:00AM

SESSION 1: SEEDING TIME

MARTINO STIERLI, THE MUSEUM OF MODERN ART
BEATRICE GALILEE, THE WORLD AROUND

- 1 COLECTIVO C733, *BACALAR ECO-PARK*
- 2 PIET OUDOLF, *CALDER GARDENS*
- 3 TROPICAL SPACE, *TERRA COTTA WORKSHOP*
- 4 PEGGY WEIL, *CORE MEMORY*
- 5 STUDIO ZEWDE, *DIA BEACON*
- 6 *YOUNG CLIMATE STORIES:
A GARDEN IN THE DESERT*
- 7 MOHAMED SALEM MOHAMED ALI,
THE NOMAD GARDEN

TOWNHALL

BREAK

2:30PM

SESSION 2: KEEPING TIME

MARTINO STIERLI, THE MUSEUM OF MODERN ART

- 1 MARIAM ISSOUFOU ARCHITECTS, *BËT-BI*
- 2 LA CABINA DE LA CURIOSIDAD,
CHAKI WASI HANDICRAFTS CENTER
- 3 PIHLMANN ARCHITECTS, *THORAVEJ 29*
- 4 HENEGHAN PENG ARCHITECTS,
GRAND EGYPTIAN MUSEUM
- 5 FRANÇOIS-XAVIER GBRE,
FROM THE EARTH TO THE SKY
- 6 BUREAU BAS SMETS,
SURROUNDINGS OF THE NOTRE-DAME

TOWNHALL

4:30PM

BREAK

5:00PM

SESSION 3: HIGH TIME

MODERATED BY MICHAEL KIMMELMAN

- 1 ALEJANDRO ARAVENA
- 2 TATIANA BILBAO
- 3 DEPUTY MAYOR FOR HOUSING AND PLANNING
LEILA BOZORG

CLOSING REMARKS

NOW

NEAR

NEXT

NOW

NEAR

NEXT

NOW

NEAR

NEXT

NOW

NEAR

NEXT

NOW

NEAR

SESSION 1: SEEDING TIME

LANDSCAPE, ECOLOGY, AND THE LONG LIFE OF LIVING THINGS

How do we design with the earth, rather than against it? Our first session gathers practitioners whose work aims to renegotiate the relationship between the built environment and the natural world. Landscape has become one of architecture's most contested and generative territories. Once seen as peripheral, landscape is now understood as the ground on which urgent questions of climate, culture, and resilience must be resolved. The presentations in this session respond to that call through different approaches: the deep time of ice cores and geological strata; the seasonal transformation of perennial gardens; the hydrological cycles of floodplains; the ingenuity of desert agriculture. Across these contexts, a shared conviction emerges: that the complexities of place—of its ecology, its histories, and even its vulnerabilities—are not constraints for design, but its most vital resource.

CURATORS

BEATRICE GALILEE

THE WORLD AROUND



Beatrice Galilee is a New York-based curator, writer, and cultural advisor, internationally recognized for her expertise in global contemporary architecture and design. She is founder and executive director of The World Around, the global platform for architecture and design. From 2014–2019, she served as the first curator of contemporary architecture and design at New York’s Metropolitan Museum of Art. Galilee is a visiting professor at Pratt Institute, where she lectures on curating. She is the author of *Radical Architecture of the Future* (Phaidon, 2021).

MARTINO STIERLI

THE MUSEUM OF MODERN ART



Martino Stierli is the Philip Johnson Chief Curator of Architecture and Design at the Museum of Modern Art in New York, where he leads a wide-ranging program of special exhibitions, installations, and acquisitions. Stierli oversaw the installation of the new Architecture and Design collection galleries in the expanded museum, which opened in October 2019. He is the author of *Montage and the Metropolis: Architecture, Modernity and the Representation of Space* (Yale University Press, 2018) and *Las Vegas in the Rearview Mirror: The City in Theory, Photography, and Film* (Getty Publications, 2013).

COLECTIVO C733

BACALAR ECO-PARK



Gabriela Carrillo is a co-founder of Colectivo C733, a group of architects committed to designing fast-track public projects across Mexico, from market halls and sports complexes, to cultural centers and educational facilities. In 2024, the collective received an Obel Award for completing 36 public projects

in the span of 36 months, revitalizing a range of marginalized urban and rural areas through varied, precise interventions. At the site of the last remaining mangrove forest on the Bacalar Lagoon—home to the world’s largest freshwater bacterial reef—Colectivo C733 created a square pier that allows visitors to see close-up a rich community of microorganisms, some billions of years old. Developing an efficient structural system using local wood and mitigating pollution from the neighboring town through its landscape strategy, the collective sought to minimize the project’s environmental footprint while protecting a precious ecosystem under threat from urbanization.

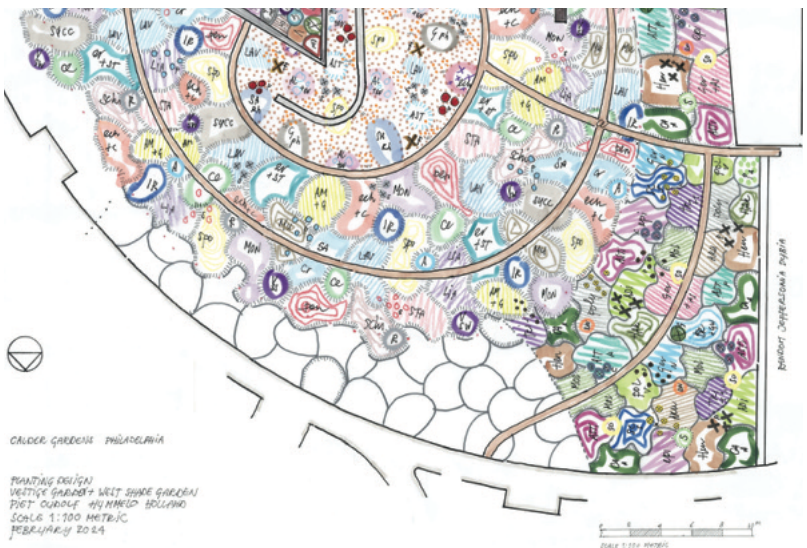


PIET OUDOLF CALDER GARDENS



Piet Oudolf is a celebrated Dutch garden designer. A leading figure of the New Perennial movement—an avant garde planting style that mimics natural botanical communities—Oudolf has gained international acclaim for his distinctive approach, which he brought to high-profile commissions such as New York’s High Line. At Calder Gardens—a new art institution dedicated to the late modernist sculptor Alexander Calder—Oudolf’s plantings cover a subterranean gallery designed by Swiss architects Herzog & de Meuron, creating a meadow-like sanctuary in downtown Philadelphia, the artist’s birthplace. Planted with 37,000 perennials from a palette of more than 195 varieties, the gardens will transform throughout the seasons, in dialogue with a rotating selection of artworks spanning Calder’s career. A complex, dense ecological patchwork, the landscape reflects Oudolf’s deep consideration for the composition of his gardens—not only in the present, but as they develop over time.

Presentation recorded at the home of Piet Oudolf in Hummelo, Netherlands, with additional footage from Calder Gardens in Philadelphia, PA, USA.



TROPICAL SPACE

TERRA COTTA WORKSHOP



Architects Nguyễn Hải Long and Trần Thị Ngụ Ngôn founded Tropical Space in 2011. Based in Ho Chi Minh City, Vietnam, and rooted in Southeast Asia, the studio maintains a deep cultural and climatic awareness across its master planning, architecture, landscape, and interior design projects. Beginning with careful

observation of the surrounding context, users, and constraints of a site, the architects aim to test the structural and aesthetic potential of vernacular materials while responding to the region's warm, humid climate. On the bank of the Thu Bồn River in Dien Phuong, a small village in the Quảng Nam Province, Tropical Space built a workshop and visitor center around the rituals of local terracotta artisans, preserving a kiln that had been on site for more than two decades. Introducing perforated brick walls to enable ventilation and allow water to flow through the structure during the river's annual flooding, the studio set out to design with nature, creating comfortable, adaptable microclimates where traditional craft can endure.



PEGGY WEIL

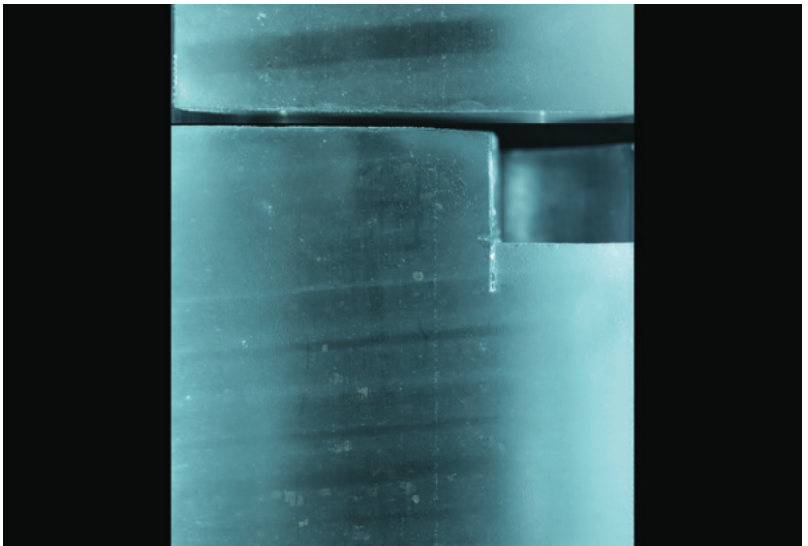
CORE MEMORY



Peggy Weil is an artist and designer based in Los Angeles. An innovator in digital portraiture, Weil's practice ranges from large-scale public installations to videos and interactive art. Since 2011, the artist has focused on what she calls "extended landscapes": works that visualize the layers of the Earth that exist

"beneath our feet, above our heads, and back in time." *Core Memory*, Weil's current exhibition at The Museum of Modern Art, brings together two of the artist's "underscapes": *88 Cores*, a video descent through the Greenland ice sheet, and *18 Cores*, which unearths images of rock cores from beneath California's Salton Sea. Rendering visible the unseen processes of climate change, Weil opens a window onto the planet as a recording device, revealing how meteorological phenomena and historical events are inscribed into polar ice sheets and geological strata in a contemplative exploration of deep time. Through these immersive vertical time capsules, the physical evidence of environmental shifts reshaping the Earth becomes perceptible—and undeniable.

Core Memory will remain open in The Agnes Gund Garden Lobby on Floor 1 at MoMA through October 4, 2026.



STUDIO ZEWDE

DIA BEACON



Sara Zewde is founding principal of Studio Zewde, a Harlem-based design studio with a portfolio spanning landscape architecture, urbanism, and public art. For a major landscape project at Dia Beacon, the Dia Art Foundation's campus in upstate New York, the studio drew inspiration from the impressions of

time on the land that now hosts the museum in the Hudson River Valley. Transforming the eight-acre lawn to the south of the building, the design introduces sculptural landforms to channel water and native meadows that act as basins, protecting the museum from river backflow during storms. With winding paths that follow the pattern of water as it moves through the floodplain, and that gesture to the site's significance as a former crossing point for the Lenape people, the studio's design strategies both honor the site's history and equip it for more intense and frequent flooding in the future.



SCREENING: YOUNG CLIMATE STORIES



Around the world, young leaders are fighting for and delivering bold, locally grounded solutions to the climate crisis. *Young Climate Stories* is an original documentary series from The World Around that brings these changemakers and their solutions to the screen.

Each episode centers on a participant of the Young Climate Prize, The World Around's initiative to support these leaders through mentorship, access, and visibility.

A Garden in the Desert brings us to Algeria's Sahrawi refugee camps where a young refugee and farmer, Mohamed Salem Mohamed Ali, confronts food insecurity and water scarcity with a garden that becomes a model of resilience and hope amid climate injustice.

PRESENTED BY

THE
WORLD
AROUND

MADE POSSIBLE BY

MillerKnoll

PRODUCED BY

4HAWK

MOHAMED SALEM MOHAMED ALI THE NOMAD GARDEN



Mohamed Salem Mohamed Ali is a Sahrawi farmer and artist, and the Young Climate Visionary winner of The World Around's Young Climate Prize Cycle 02. Ali's project, The Nomad Garden, is located in Algeria's Smara refugee camp, where the arid climate has forced Sahrawi refugees to depend on

humanitarian aid for their sustenance. As rising temperatures exacerbate the strain on life in this harsh environment, Ali is using his garden to experiment with alternative approaches to desert agriculture—including “sandponic” and hydroponic systems—as potential solutions to growing food insecurity within his community. But Ali hopes that the project doesn't remain a singular oasis: The Nomad Garden is also the subject of a film that Ali made to encourage more Sahrawi refugees to cultivate their own produce as a path towards the group's eventual self-reliance. Through the Young Climate Prize, Ali developed his project with mentorship from Brendan McGetrick, creative director of the Museum of the Future in Dubai.



Fondation *Cartier* pour l'art contemporain

MACHINES
AND ARCHITECTURES
HUTS AND CHAPELS

EXPOSITION GÉNÉRALE

LECTURES *of the Collection*
AND
PERFORMANCES

GARDENS
AND LANDSCAPES

BICYCLES
AND SUBMARINES

MUSIC AND
FICTIONS

exhibition 25.10.2025 → 23.08.2026

2 Place du Palais-Royal, Paris, France

fondationcartier.com

graphic design: deValence

SCREENS
AND VIDEO GAMES

MATH AND GEOGRAPHY

UniFor Supports

THE WORLD AROUND

UniFor
152 Madison Avenue 8th Floor
New York, NY 10016
T +1 212 673 3434
unifor.it

UniFor



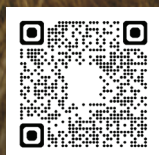
Geometry of Life [Chapter 1]. A movie shot at Palazzo Molteni, Milan.
moltenigroup.com / shop.molteni.it

An Italian Design Story

Molteni & C

We believe in the power of better

MillerKnoll is proud to partner
with The World Around to
support the Young Climate Prize.



Read our Better World
Report to learn more
about our commitment
to designing and
shaping a better world.

MillerKnoll

YOUNG CLIMATE PRIZE

CHANGE
TOMORROW

Join the global initiative
accelerating a new generation
of climate leadership.
youngclimateprize.org

THE
WORLD
AROUND

EST. 1934
DESIGNED IN NEW ZEALAND



FISHER & PAYKEL

NYC ARCHITECTS

photographed by Lucas Creighton for PIN-UP
in collaboration with The World Around



**PIN-UP 40
SPRING SUMMER 2026
OUT NOW**

PINUPMAGAZINE.ORG



the Grand Tourist

THEGRANDTOURIST.NET

SESSION 2: KEEPING TIME

CULTURAL HERITAGE, RESTITUTION, AND A NEW FUTURE FOR THE PAST

Heritage has never been a neutral category. The question of what we choose to protect—and what we allow to recede into the past—is inseparable from the hierarchies of power, notions of belonging, and our systems of value. As architects have gained awareness of the environmental impacts of the building industry, the discipline has been forced to confront those questions with renewed urgency. This session gathers practitioners whose work operates at the intersection of these overlapping imperatives: a museum in Senegal conceived as a place of return for the artifacts of precolonial African cultures, a former factory dismantled and reconfigured from within, a handicrafts center on an Andean caldera built using practices transmitted across generations. Together, their projects present a case for rethinking how we relate to the inheritance of the past, contending with how our histories live on in the present to ask what we want for the societies of the future.

MARIAM ISSOUFOU ARCHITECTS

BËT-BI



Mariam Issoufou is an architect from Niger. In 2014, Issoufou founded her eponymous research-based practice, whose designs are rooted in identity, place, and history. With offices in Niamey, New York, and Zurich, the firm's completed projects include the Hikma Community Complex—a

library and mosque building in Niger—and Niamey 2000 Housing, a development conceived in response to the country's deepening housing crisis. For the design of Bët-bi, a new museum and a centre for culture and community in southwestern Senegal, Issoufou's studio approached the project as an opportunity to reassess what defines a museum in the 21st century. Rather than reference the 19th-century typology of the museum, Issoufou's studio drew on the rich cultural heritage that produced many of the artifacts these institutions hold, grounding its response in the region's precolonial history. Once open, the museum has plans to serve as a temporary space for repatriated objects, supporting the return of African art to the places of its creation.



LA CABINA DE LA CURIOSIDAD

CHAKI WASI HANDICRAFTS CENTER



La Cabina de la Curiosidad is a Quito-based design and research practice combining architecture, craft, and education. Founded by Marie Combette and Daniel Moreno Flores in 2019, the practice investigates notions of community and territory through transdisciplinary collaboration and

building projects, emerging from a deep commitment to architecture as a shared cultural endeavour. On the slopes of the caldera that holds the Quilotoa Lake in the Ecuadorian Andes, La Cabina worked with the Shalalá Indigenous community to design a visitor center and market hall for handicrafts. Called *Chaki Wasi*—meaning “house made of straw from the ground up” in Kichwa, a regional language—the center embodies Andean culture through its use of traditional building techniques. Conceived to promote local tourism while supporting the long-term needs of the Shalalá community, the project is rooted in practices transmitted through generations, celebrating the rituals of building to frame preservation as a generative act.



PIHLMANN ARCHITECTS

THORAVEJ 29



Søren Pihlmann founded Copenhagen-based pihlmann architects in 2021. Approaching the existing context as its point of departure, the practice closely considers materials, construction systems, and production logics in its projects. At Thoravej 29, pihlmann architects transformed a 1960s

Copenhagen factory into an animated space for arts and community. Through the careful dismantling, cataloguing, and repurposing of structural elements, surfaces, and interior components, the practice sought to enable the building to recycle itself. Floor slabs were tilted into staircases, walls were transplanted to form pavements, and fittings were reborn as furniture. Prioritizing subtraction and adaptation over the addition of new material, the practice recognized the building's heritage as part of a cyclical system, incorporating traces of its former uses into the life of the new spaces. Now, the building houses studios and production spaces for artists, as well as workshops, exhibition rooms, a public café, and offices for a number of cultural organizations. With 95% of its existing material retained through the transformation, the project stands as a radically conservative model of structural reuse.

Presentation recorded at Thoravej 29 in Copenhagen, Denmark.



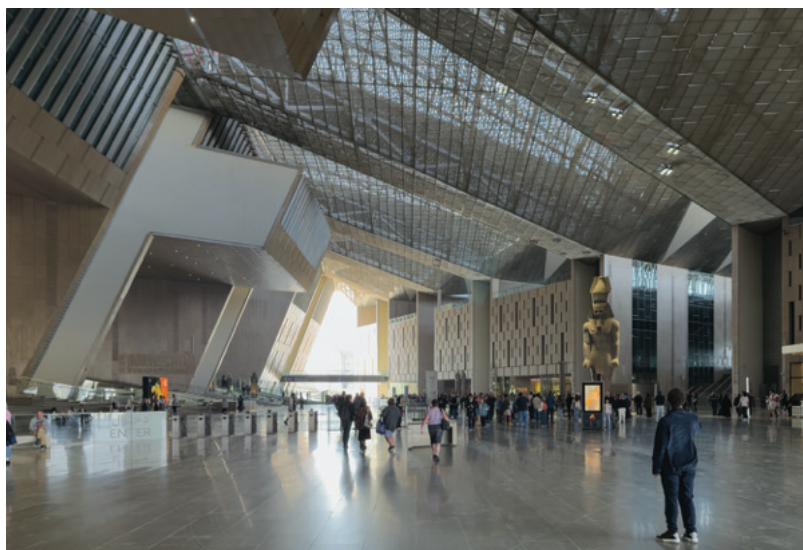
HENEGHAN PENG ARCHITECTS

GRAND EGYPTIAN MUSEUM



Róisín Heneghan is co-founder, with Shih-Fu Peng, of heneghan peng architects (hparc), a landscape, urban planning, and architecture practice with offices in Dublin and Berlin. In 2003, when the practice was a team of four, hparc won the international competition for the Grand Egyptian Museum,

triumphing over 1,556 other entries. Now, more than three decades after plans for the project were first announced—surviving a storm of political and economic crises—the highly anticipated museum is complete, with its final gallery opening to the public in November 2025. Located on a site adjacent to the Giza archeological complex, the vast museum houses more than 100,000 artifacts, thousands of which are on display for the first time. Radiating out toward the pyramids, the building guides visitors on a chronological route from the contemporary world to the land of the pharaohs, standing as a bridge between past and present.



FRANÇOIS-XAVIER GBRÉ

FROM THE EARTH TO THE SKY



François-Xavier Gbré is a photographer who lives and works between La Rochelle, France, and Abidjan, Ivory Coast. For the past 15 years, Gbré has investigated the built environment across West Africa as an evolving record of economic development, social change, and memory. From the dilapidated remnants of colonial-era institutions to the monuments of post-independence urban development, Gbré's photographs frame the region's architectural heritage as part of its contemporary reality, revealing how the legacies of the past meet in the present. Gbré's works can be found in the collections of the Centre Pompidou, The Museum of Modern Art, The Metropolitan Museum of Art, the Smithsonian Institution, and the Tate Modern, among numerous other institutions. In 2020, Gbré won the Louis Roederer Foundation Discovery Award at Les Rencontres d'Arles. He was the inaugural laureate of the Fondation d'entreprise Hermès' Latitudes program.



BUREAU BAS SMETS

SURROUNDINGS OF THE NOTRE-DAME



With a background in civil engineering and architecture, Bas Smets's distinct approach to urban landscape design is informed by an understanding of the city as an ecosystem. Since founding his Brussels-based firm in 2007, Smets has completed more than 50 international projects. In 2022, Bureau Bas Smets

won the prestigious international competition to redesign the public space surrounding Notre-Dame Cathedral in Paris. The comprehensive project reenvisioned the esplanade leading to the medieval cathedral through the lens of the natural environment and outdoor comfort, reconfiguring the space as a sequence of overlapping “climatic atmospheres.” Doubling the number of trees on site and introducing an innovative ground cooling system, the firm deployed shade, water, and wind in its design to counter summer heatwaves in the heart of Paris. Building on Smets's research into urban microclimates, the project reevaluates the role public spaces should serve in a time of accelerating global warming—and offers a model for how cities might prepare sites of historical significance for the future.



WAIWAI BUKHARA HERITAGE DISTRICT



The architectural fabric of Bukhara has long been the product of far-ranging cultural influences. Since its period as a flourishing center of trade along the Silk Road in the ninth and 10th centuries, the Uzbekistan city has developed in continual relation to the commercial, intellectual, and spiritual ties it shares with its near and distant neighbors. With the masterplan for the restoration of Bukhara's historic center, Wael Al Awar—founding partner of Dubai- and Tokyo-based firm waiwai—aimed to continue this dialogue, repositioning Bukhara as a platform for cultural exchange in the 21st century. Departing from models of conservation that serve to maintain historic sites at a single moment in time, waiwai learned from the builders and artisans who have sustained Bukhara's built heritage throughout its history—and their continual reinvention of tradition as new materials and technologies passed through the city. Inaugurated at the first edition of the Bukhara Biennial in September 2025 but remaining open-ended, the project offers a reframing of conservation as a living process of adaptation and renewal.

Essay published on Insights, The World Around's editorial platform.



KPF 50

Celebrating 50 years of
transforming cities.

Proudly supporting
THE WORLD AROUND.

SOM proudly supports
The World Around Summit

SOM



STIRworld.com | STIRpad.com | STIRfri

SESSION 3: HIGH TIME

AFFORDABLE HOUSING AND THE FUTURE OF NEW YORK CITY

Housing is perhaps architecture's most tested claim to social purpose, and its most visible point of failure. Few problems are as technically understood and politically intractable as the shortage of affordable homes. The knowledge exists; the precedents are substantial. What has proved difficult to achieve is the translation of that expertise into policy, and of policy into built reality, at the scale urban populations need. Today, in New York as in cities around the world, the housing crisis is not an abstraction, but a force shaping urban life, raising questions that architecture alone cannot answer but cannot afford to ignore. Our final session of the day is conceived as a civic forum, a sustained exchange on what a genuinely livable New York might look like, and what it would take to build one.

MICHAEL KIMMELMAN

CRITIC

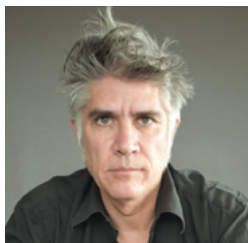


Michael Kimmelman is the architecture critic for The New York Times. He is also the founder and editor at large of Headway, a new philanthropically supported initiative of The New York Times addressing global challenges and paths toward progress. A longtime contributor to The New York Review

of Books, Kimmelman has reported from more than 40 countries, writing on design and the built world, politics and culture, climate change, social and environmental justice, urban planning, and community development. As a public speaker, he has lectured at institutions around the globe. Previously, Kimmelman taught at Harvard and was the Franke Visiting Fellow at Yale's Whitney Humanities Center.

ELEMENTAL

ALEJANDRO ARAVENA



Alejandro Aravena is partner and executive director of ELEMENTAL, an architecture practice and “Do-Tank” based in Santiago, Chile. Since founding the practice in 2001, Aravena has sought to develop a new paradigm for architecture as a means of addressing social and environmental issues,

meeting incisive analysis with design proposals that give form to solutions. ELEMENTAL first gained global attention for the “incremental” housing model it devised for a social housing scheme in Quinta Monroy, Chile. To date, more than 4,000 low-cost incremental housing units have been erected in Chile, inspiring imitations across South America and establishing a new grammar for housing provision in conditions of constraint. ELEMENTAL has continued to innovate by developing prefabricated modular housing in Viña del Mar to support reconstruction in the aftermath of the 2024 Chilean wildfires. Meanwhile, the studio’s “Basic Services Unit” uses carbon-sequestering biochar as a cement substitute, presenting a more sustainable prototype for countries where concrete remains the most affordable and reliable construction material.



TATIANA BILBAO ESTUDIO

TATIANA BILBAO



Before founding her eponymous architecture studio in 2004, Tatiana Bilbao served as an advisor at the Ministry of Urban Development and Housing in Mexico City. Her practice now aims to integrate research, design, and community-based strategies, approaching architecture as a medium

to help people improve their quality of life. In the past two decades, the studio has developed a wide portfolio of housing projects that address the challenges of affordability and density, pushing its briefs past the minimum requirements of provision to design generous spaces for living. Examples include a trio of buildings in Lyon, France, where inviting open spaces encourage a diverse mix of residents to come together, and a complex in Monterrey, Mexico, which aims to return a sense of neighborhood to collective urban life by arranging individual units around informal communal areas and shared amenities. Through these projects, the studio has remained committed in its research into models of housing with the potential to be replicated at scale while accommodating difference, grounded in a fundamental conviction that all people have the right to dwell in dignity.



LEILA BOZORG

DEPUTY MAYOR FOR HOUSING AND PLANNING NEW YORK CITY



Leila Bozorg is the Deputy Mayor for Housing and Planning in New York City, where she leads citywide housing and land use strategies that guide New York City's growth and affordability agenda. She is a housing and urban policy leader with more than 15 years of experience shaping policy, land use, and housing

finance strategies to deliver large-scale, equity-driven outcomes. Throughout her tenure in public service, Bozorg has played a central role in landmark initiatives including the City of Yes for Housing Opportunity zoning reform, public housing preservation efforts leveraging billions in public and private investment, creating the City's first comprehensive fair housing plan, and designing innovative housing finance and development programs. Her career spans senior roles at NYC Housing Preservation and Development, the City Planning Commission, the US Department of Housing and Urban Development, and NYC Kids RISE. She holds a Master in City Planning from MIT and a BA from Wesleyan University.

ABOUT THE MUSEUM OF MODERN ART

The Museum of Modern Art connects people from around the world to the art of our time. The Museum aspires to be a catalyst for experimentation, learning, and creativity, a gathering place for all, and a home for artists and their ideas.

MoMA's rich and varied collection constitutes one of the most comprehensive and panoramic views into modern art. From an initial gift of eight prints and one drawing, the Museum's collection has grown to approximately 200,000 paintings, sculptures, drawings, prints, photographs, media and performance art works, architectural models and drawings, design objects, and films.

The Museum maintains an active schedule of modern and contemporary art exhibitions addressing a wide range of subject matter, mediums, and time periods, highlighting significant recent developments in the visual arts and new interpretations of major artists and art historical movements. Ongoing programs of classic and contemporary films range from retrospectives and historical surveys to introductions of the work of independent and experimental film- and video makers.

Today, The Museum of Modern Art and MoMA PS1 welcome millions of visitors every year. A still larger public is served by MoMA's national and international programs of circulating exhibitions, loan programs, circulating film and video library, publications, Library and Archives holdings, websites, educational activities, special events, and retail sales.

ABOUT THE WORLD AROUND

The World Around is the global platform for architecture and design, championing the visionary ideas and voices that shape our cities, planet, and future. Led by curator and critic Beatrice Galilee and founded as a nonprofit in New York City in 2020, The World Around's mission is to advance the outstanding practices, people, and solutions that can build a more equitable and regenerative world.

Often working in collaborative partnership with cultural institutions and like-minded organizations, The World Around's output includes: Programs, offering cutting edge, global and interdisciplinary perspectives; Initiatives, including its flagship Young Climate Prize; Insights, published interviews and exclusive Dispatches that synthesize the research and perspectives of its global network; and its extensive online Video Archive of original talks, interviews, and presentations, making the latest work and new ideas of the world's remarkable practitioners accessible to all.

Over the past six years, we have covered the work of designers from over 150 world cities, each of them sharing visionary work on topics that range from the ecological crisis to social and racial justice, from landscape design and food scarcity to homelessness, from video game design and artificial intelligence to spoken word and literature.

JOIN OUR CIRCLES



The World Around is a 501(c)(3) registered charity.

Our work is made possible thanks to the support of our generous and engaged community. By joining our circles—as either an individual or a company—you ensure that our public programs including our Annual Summit and our educational initiatives including Young Climate Prize can continue.

Circle members receive year-round invitations to private screenings, openings and studio visits. Give to The World Around and become part of a global network of forward-thinking creatives.

LEARN MORE:



Fondation *Cartier* pour l'art contemporain

The Fondation Cartier pour l'art contemporain is a forum for discussion and artistic experimentation that places contemporary art in all its forms, its exhibition, and its accessibility to the public at the core of its institutional mission. Since its founding in 1984 by Alain Dominique Perrin, who was President of Cartier at that time, its activities have promoted collaboration and exchange across artistic disciplines. Built up over the course of its exhibitions, its Collection reflects the multidisciplinary and breadth of the themes it explores through its programming, in resonance with society and contemporary stakes.

The Fondation Cartier carries out its activities and commitments with the desire and ambition to make contemporary art accessible to everyone. Through its program of exhibitions and events, the Fondation Cartier creates pathways between creative spaces and fosters a genuine environment for multicultural exchange.

Its new premises, located at 2 Place du Palais-Royal in a Haussmannian building constructed in 1855, have been completely reconceived by architect Jean Nouvel. The dynamic architecture he envisioned, consisting of five mobile platforms, allows for fully adjustable spatial configurations and lighting variations, multiplying the possibilities for programming and exhibition-making. The architecture acts as a flexible system serving the institution's commitments, open to the broad spectrum of visual arts, crafts, performance and science.

UniFor | Molteni & C

At the forefront of global design culture, UniFor and Molteni&C reflect the ongoing dialogue between architecture, craftsmanship, and industrial innovation.

Part of the Molteni Group—Italy’s leading independent industrial group in the high-end furniture sector—UniFor and Molteni&C represent the excellence of Made in Italy manufacturing. Molteni&C, founded in 1934 by Angelo and Giuseppina Molteni as a small artisan workshop, rose to prominence in the 1950s as a pioneer of Italian industrial design. Today, the brand offers refined solutions for indoor, outdoor, kitchen, and bespoke environments, working in partnership with world-renowned architects and designers. Since 1969, UniFor has focused on interpreting the complexity of contemporary workplaces through elegant and essential furnishing systems. With architects as its primary collaborators, UniFor develops solutions that integrate seamlessly with the built environment.

Together, UniFor and Molteni&C take a comprehensive approach to design, delivering integrated, bespoke solutions for sophisticated global projects. With operations in over 100 countries, the Molteni Group continues to support the evolution of contemporary design through enduring partnerships and lasting collaborations.

FISHER & PAYKEL

Luxury appliances, designed in Aotearoa New Zealand since 1934.

Fisher & Paykel is a global luxury appliance company founded in New Zealand with a unique culture of curiosity and world-first innovation. For 90 years, the company has challenged conventional appliance design with a human insight, performance innovation, and technology-led approach, resulting in iconic products that respond to the changing nature of the kitchen and reimagine the future of fabric care.

Today, as Fisher & Paykel designs for a changing world, it carries its legacy of innovation into the future with efficient, connected, and refined appliance ecosystems. Built to last and engineered for life, these systems integrate seamlessly with modern homes and lifestyles, and accelerate the zero-carbon transition.

MillerKnoll

MillerKnoll is a collective of dynamic brands that comes together to design the world we live in. The MillerKnoll brand portfolio includes Herman Miller, Knoll, Colebrook Bosson Saunders, Design Within Reach, Edelman, Geiger, HAY, HOLLY HUNT, Knoll Textiles, Maharam, Muuto, NaughtOne, and Spinneybeck|FilzFelt. MillerKnoll is an unparalleled platform that redefines modern for the 21st century by building a more sustainable, equitable, and beautiful future for all.

Proud Supporter of The World Around Summit 2026


Our Vision for What's Next

Brown & Brown's insurance specialists remain committed to delivering tailored risk and coverage solutions to support the people and practices that are building a more sustainable future.

Get in Touch

Nadine Vasquez
Senior Vice President
Nadine.Vasquez@bbrown.com

 **Brown & Brown**



*LSM PROUDLY SUPPORTS THE VISION
OF THE WORLD AROUND
TO FOSTER CONNECTIONS AND AMPLIFY
GLOBAL IDEAS UNITING DESIGN,
CULTURE, ART, AND BUSINESS.*

LSM

para·tus

Project Direction

www.paratusgroup.com

REDDYMADE

**Form
Follows
Feeling**

reddymade.design
@reddymadedesign

IMAGE CREDITS

- P11 *Beatrice Galilee* photo by Marco Giannavola.
Martino Stierli photo by Peter Ross © The Museum of Modern Art, New York.
- P12 *Gabriela Carrillo* © Gabriela Carillo.
Ecoparque Bacalar photo by Rafael Gamo.
- P13 *Piet Oudolf* © Piet Oudolf.
Calder Gardens Drawing © Piet Oudolf.
- P14 *Nguyễn Hải Long and Trần Thị Ngụ Ngôn* photo by Trieu Chien.
Terra Cotta Workshop Landscape photo by Trieu Chien.
- P15 *Peggy Weil* © Peggy Weil.
88 Cores at 2h41m20s, -2137m © Peggy Weil.
- P16 *Sara Zewde* photo by Glademir Gelin.
Sweet Spot Dia Beacon © Sara Zewde.
- P17 *Brendan McGetrick with Mohamed Salem Mohamed Ali at his home in the Smara refugee camp, Algeria* photo by CG Foisy.
- P18 *Mohamed Salem Mohamed Ali* photo by Paul Maffi.
Mohamed Salem Mohamed Ali in his Nomad Garden, Smara refugee camp, Algeria photo by CG Foisy.
- P27 *Mariam Issoufou* photo by Aboubakar Magagi © Mariam Issoufou Architects.
Bêt-bi Museum © Mariam Issoufou Architects.
- P28 *Marie Combette and Daniel Moreno Flores* © Santiago Vaca.
Centrote Artesanía Chaki Wasi © Francesco Russo.
- P29 *Søren Pihlmann* photo by Andrea Pugiotto.
Thoravej 29 photo by Hampus Berndtson.
- P30 *Róisín Heneghan* photo by Joanne Murphy.
Grand Egyptian Museum photo by Iwan Baan.
- P31 *François-Xavier Gbré* © François-Xavier Gbré.
La Pyramide, Abidjan, Ivory Coast © François-Xavier Gbré.
- P32 *Bas Smets* © Jade Quintin.
View of the Notre Dame © Studio Alma for Team Bureau Bas Smets.
- P33 *Wael Al Awar* photo by Jacopo Salvi.
Antique Brickwork Reconnecting the Heritage Site with the Caravanseraï Complex photo by Deed © waiwai.
- P37 *Michael Kimmelman* © Michael Kimmelman.
- P38 *Alejandro Aravena* © Alejandro Aravena.
Viña del Mar Reconstruction © ELEMENTAL.
- P39 *Tatiana Bilbao* © Ana Hop.
Roble 700 © Tatiana Bilbao Estudio.
- P40 *Leila Bozorg* © NYC Office of the Mayor.
- P47 *Circles gathering at In Focus: Radical Repair* © Nieuwe Instituut.

SUMMIT 2026

THE WORLD AROUND
GLOBAL CULTURAL PARTNER

Fondation *Cartier*
pour l'art contemporain

THE WORLD AROUND
PARTNERS

UniFor | Molteni & C

FISHER & PAYKEL

YOUNG CLIMATE PRIZE
DESIGN PARTNER

MillerKnoll

THE WORLD AROUND
SUPPORTER

Graham Foundation

SUMMIT CIRCLES

KPF
Brown & Brown
LSM
Mr and Mrs Howard K Cohen
Charitable Fund
Paratus Group
Reddymade
Rockwell Group
SOM

THE WORLD AROUND
MEDIA PARTNERS

PIN-UP

the Grand Tourist

stir

WITH SPECIAL THANKS

To My Ships

THE WORLD AROUND TEAM

FOUNDER & EXECUTIVE DIRECTOR

Beatrice Galilee

DIRECTOR OF PROGRAMS & SPECIAL PROJECTS

Satomi Blair

DIRECTOR OF DEVELOPMENT

Marilyn Hernández

DIRECTOR OF EDITORIAL & STRATEGY

Dan Howarth

MANAGER OF PROGRAMS & SPECIAL PROJECTS

Ana Minujin

COMMUNICATIONS COORDINATOR

Laxmi Andrews

PRODUCTION & COMMUNICATIONS ASSISTANT

Sunena Maju

CREATIVE DIRECTION

2x4

ANIMATION

Jae Ee

THE WORLD AROUND BOARD

BOARD OF DIRECTORS

Adam Flatto, Board Chairman

Amanda Burden

Vishaan Chakrabarti

Joan Davidson

Elizabeth Diller

Peter Dillon

Wendy Fisher

Beatrice Galilee

Mariam Issoufou

Diego Marroquin, Co-Founder and

Chairman Emeritus

BOARD OF ADVISORS

Felix Burrichter

Brian Butterfield

Simon Castets

Carson Chan

Aric Chen

Emily de Vismes

Béatrice Grenier

Jaffer Kolb

Jing Liu

Ben Rawlingson Plant

Susan Sellers

Adrián Villar Rojas

YOUNG CLIMATE PRIZE

BOARD OF ADVISORS

Valentin Abend

Helen Aboah

Pamela Elizarrarás Acitores

Jin Gao

Joseph Nguthiru

Tosin Oshinowo

Will Hunter

Whitney McGuire

Harry Pearce

Emmanuel Pratt

THE WORLD AROUND

